

Technical Information

Expanding TX/RX frequency Coverage of IC-7850/IC-7851

Following information is regarding the modification of expanding the TX/RX frequency coverage of the IC-7850/IC-7851

TX Frequency expansion

	Frequency Coverage	D3367	D3368
1	1.6 - 29.999 MHz 50 .000– 54.000 MHz	No	No
2	1.6 – 29.999 MHz 30.000 – 54.000 MHz	Yes	No
3	0.1 – 29.999 MHz 30.000 – 60.000 MHz	NO	Yes

FRA version has no D3367 diode. If activate above function, you have to put D3367 on the board.

RX Frequency expansion

	Frequency Coverage	D3352
1	0.03 – 60.000 MHz	No

5 MHz BAND TX Frequency expansion

	Frequency Coverage	D3364
Allows 5 MHz	5.255 – 5.405 MHz	No

137 kHz BAND TX Frequency expansion

	Frequency Coverage	D3366
Allows 137 kHz	0.1357 – 0.1378 MHz	No

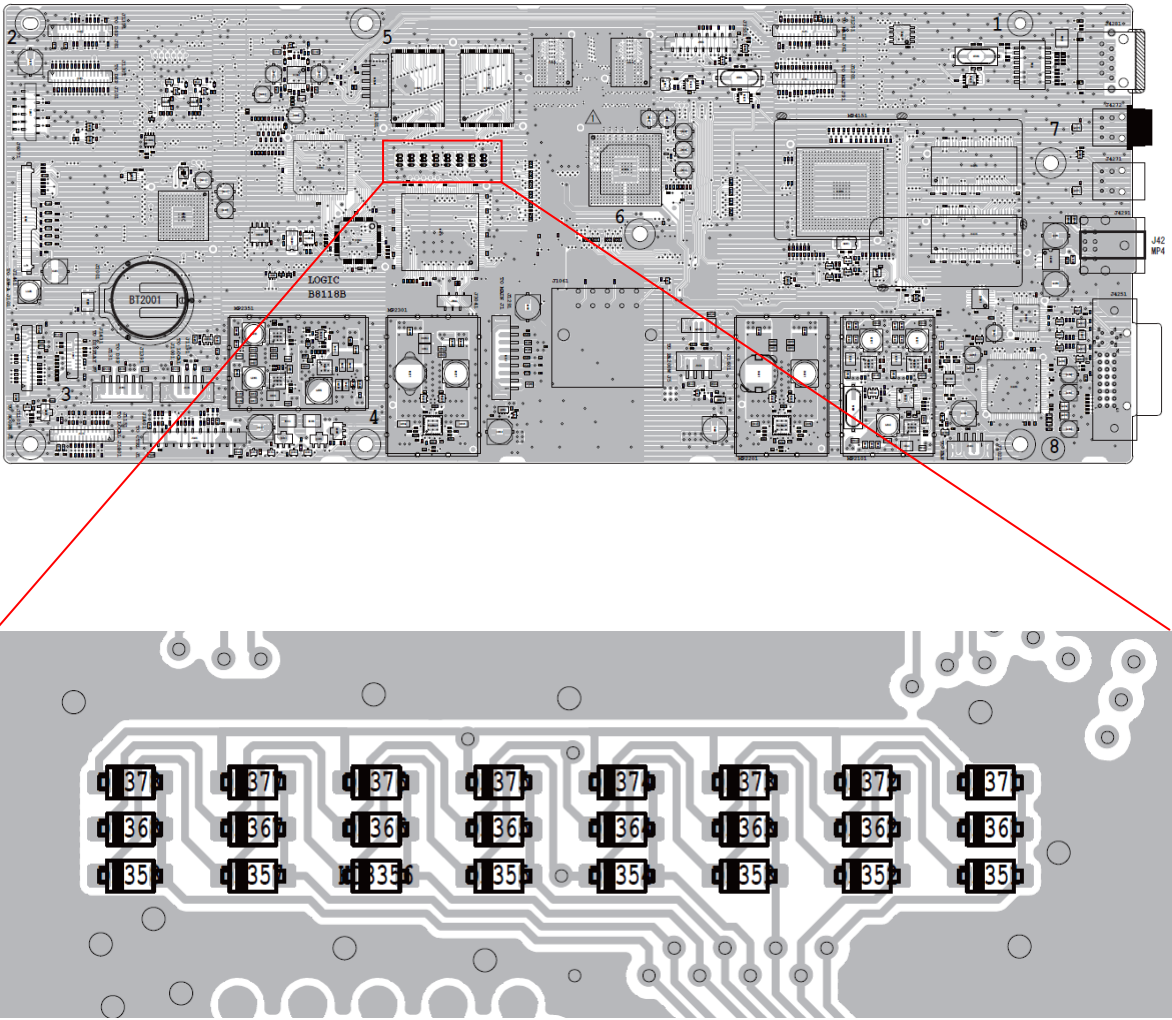
475 kHz BAND TX Frequency expansion

	Frequency Coverage	D3365
Allows 475 kHz	0.472 – 0.479 MHz	No

7 MHz BAND TX Frequency expansion

	Frequency Coverage	D3363
Allows 7 MHz	7.000 – 7.300 MHz	No

LOGIC UNIT Top Side



Diode's locations

D3378	D3377	D3376	D3375	D3374	D3373	D3372	D3371
D3368	D3367	D3366	D3365	D3364	D3363	D3362	D3361
D3358	D3357	D3356	D3355	D3354	D3353	D3352	D3351